

Fertility Data

Extensive Analysis

Tarak Kharrat¹ and Georgi N. Boshnakov²

¹Salford Business School, University of Salford, UK.

²School of Mathematics, University of Manchester, UK.

August 15, 2019

Abstract

This document analyses in details the fertility data first discussed by [Winkelmann \(1995\)](#) and further analysed by [McShane et al. \(2008\)](#) and recently by [Baker and Kharrat \(2017\)](#). The computation described in this document is done in R ([R Core Team, 2016](#)) using the contributed package `Countr` ([Kharrat and Boshnakov, 2017](#)). The package implements the algorithms described in [Baker and Kharrat \(2017\)](#) and an improved version of the methods derived in [McShane et al. \(2008\)](#) for the weibull-count models. For this example, we compare the weibull-count model to the standard Poisson `glm` and describe methods to select the best model and access the goodness of fit of the selected model.

This vignette is part of package `Countr` (see [Kharrat et al., 2019](#)).

1 Prerequisites

We will do the analysis of the data with package `Countr`, so we load it:

```
library(Countr)
```

Packages `dplyr` ([Wickham and Francois, 2016](#)) and ([Dahl, 2016](#)) provide usefull facilities for data manipulation and presentation:

```
library(dplyr)
library(xtable)
```

2 Data

The fertility dataset was first analysed by [Winkelmann \(1995\)](#) and we are thankful to Blake McShane for sharing it with us. We changed somewhat the format of the columns by replacing dummy variables with factor variables and renaming them. For example, the dummy variables for the different religions are replaced by a single variable "`Religion`", a factor with levels `Other`, `Catholic`, `Muslim` and `Protestant`. These reformatted data are shipped with package `Countr` and can be loaded in the usual way:

```
data(fertility)
```

	children	german	years_school	voc_train	university	Religion	year_birth	rural	age_marriage
1	2	no	8	no	no	Other	42	yes	20
2	3	no	8	no	no	Other	55	yes	21
3	2	no	8	no	no	Other	51	yes	24
4	4	no	8	no	no	Other	54	no	26
5	2	no	8	no	no	Other	46	yes	22
6	2	no	8	no	no	Other	41	no	18

Table 1: First few rows of fertility data.

	0	1	2	3	4	5	6	7	8	>= 9
Frequency	76	239	483	228	118	44	30	10	8	7
Relative frequency	0.061	0.19	0.39	0.18	0.095	0.035	0.024	0.008	0.0064	0.0056

Table 2: Fertility data: Frequency distribution of column `children`.

The first few rows of the data are shown in Table 1. The sample is formed by observation of 1243 women aged 44 or older in 1985 who answered the questions relevant to the analysis conducted by the *German Socio-Economic Panel*. The count variable `children` is the number of births per woman and is characterised by small *underdispersion*: the variance of the number of births is less than the mean, 2.33 versus 2.384

There are 8 possible explanatory variables: 3 continuous and 5 categorical (factors), describing the risk of a birth, see the package documentation for further details.

This computes separate summaries for the numeric and non-numeric variables:

```
nam_fac <- sapply(fertility, function(x) !is.numeric(x))
fert_factor <- summary(fertility[, nam_fac])
fert_num <- t(sapply(fertility[, !nam_fac], summary))
```

The results are shown in Tables 3 and 4.

	german	voc_train	university	Religion	rural
1	no :245	no :704	no :1207	Other :130	no :613
2	yes:998	yes:539	yes: 36	Catholic :502	yes:630
3				Muslim : 75	
4				Protestant:536	

Table 3: Summary of the factor variables

3 Fitting a model

The benchmark for this data set is the Poisson `glm`. It can be fitted in the usual way using the `glm()` function.

```
form <- children ~ german + years_school + voc_train + university + Religion +
  year_birth + rural + age_marriage
```

	Min.	1st Qu.	Median	Mean	3rd Qu.	Max.
children	0.00	1.00	2.00	2.38	3.00	11.00
years_school	8.00	9.00	9.00	9.10	9.00	13.00
year_birth	40.00	45.00	50.00	51.99	58.00	83.00
age_marriage	17.00	21.00	23.00	23.11	25.00	30.00

Table 4: Summary of the numeric explanatory variables

```
pois <- glm(formula = form, data = fertility, family = poisson())
summary(pois)
```

Call:

```
glm(formula = form, family = poisson(), data = fertility)
```

Deviance Residuals:

```
      Min       1Q   Median       3Q      Max
-3.1839 -0.6964 -0.0792  0.4088  4.1954
```

Coefficients:

```
              Estimate Std. Error z value Pr(>|z|)
(Intercept)    1.147444   0.301658   3.804 0.000142 ***
germany        -0.200362   0.072135  -2.778 0.005476 **
years_school    0.033506   0.032455   1.032 0.301901
voc_trainyes   -0.152776   0.043856  -3.484 0.000495 ***
universityyes  -0.154830   0.158779  -0.975 0.329498
ReligionCatholic 0.218038   0.070716   3.083 0.002047 **
ReligionMuslim  0.547571   0.085039   6.439 1.20e-10 ***
ReligionProtestant 0.113410   0.076272   1.487 0.137038
year_birth      0.002418   0.002383   1.015 0.310213
ruralyes        0.059072   0.038120   1.550 0.121224
age_marriage   -0.030446   0.006510  -4.677 2.91e-06 ***
```

Signif. codes: 0 '***' 0.001 '**' 0.01 '*' 0.05 '.' 0.1 ' ' 1

(Dispersion parameter for poisson family taken to be 1)

```
Null deviance: 1204.3 on 1242 degrees of freedom
Residual deviance: 1034.4 on 1232 degrees of freedom
AIC: 4225.6
```

Number of Fisher Scoring iterations: 5

One alternative to the standard Poisson model is the renewal count models implemented in `Countr`. In theory, any survival density can be used to build the associated renewal-count model using the computation methods detailed in [Baker and Kharrat \(2017\)](#).

3.1 Distributions

The package offers several choices for the inter-arrival times distribution. The overview here is for `Countr` version 3.4.1. There are three main distributions: `weibull`, `gamma` and `gengamma`

(generalised gamma). They should work fine with all data sets. There are also some experimental distributions, `weibullgam` (weibull-gamma, see [McShane et al., 2008](#), Section 3.2) and `burr`, which should be used with care. Users can also use their own `dist = "custom"` distributions but the computation times in this case may become cumbersome and should be avoided with large datasets.

3.2 Algorithms

Three main algorithms have been implemented to compute the associated convolution problem in the function `renewalCount()` and can be specified by choosing the desired method in the `convPars` argument. The performance of the different algorithms has been compared in [Baker and Kharrat \(2017, Section 7.2\)](#). The default set-up is to use the `dePril` algorithm with 50 steps and extrapolation. We found that this set-up worked quite well for a large range of examples. The weibull-count model can also be fitted using 2 series expansion methods. These algorithms are usually faster but less reliable for large counts (≥ 10).

The following code fits a weibull-count model to the fertility data using the default algorithm and the PORT optimisation routine (`nlminb`).

```
form <- children ~ german + years_school + voc_train + university + Religion +
  year_birth + rural + age_marriage
wei <- renewalCount(formula = form, data = fertility, dist = "weibull",
  weiMethod = "conv_dePril",
  control = renewal.control(trace = 0, method = "nlminb")
)
summary(wei)
```

Call:

```
renewalCount(formula = form, data = fertility, dist = "weibull",
  control = renewal.control(trace = 0, method = "nlminb"),
  weiMethod = "conv_dePril")
```

Pearson residuals:

```
      Min      1Q  Median      3Q      Max
-2.6721 -0.9975 -0.2462  0.4292  7.1926
```

Inter-arrival dist.: weibull

Links: scale: link log, shape: link log

Count model coefficients

	Estimate	Std. Error	z value	Pr(> z)	
scale_	1.397176	0.304994	4.581	4.63e-06	***
scale_germany	-0.222547	0.072208	-3.082	0.002056	**
scale_years_school	0.038533	0.032604	1.182	0.237269	
scale_voc_train	-0.173348	0.043996	-3.940	8.15e-05	***
scale_university	-0.181454	0.159394	-1.138	0.254953	
scale_ReligionCatholic	0.241996	0.070708	3.422	0.000621	***
scale_ReligionMuslim	0.638743	0.086420	7.391	1.46e-13	***
scale_ReligionProtestant	0.123141	0.076195	1.616	0.106064	
scale_year_birth	0.002305	0.002383	0.967	0.333439	
scale_rural	0.068059	0.038169	1.783	0.074570	.
scale_age_marriage	-0.034026	0.006537	-5.205	1.94e-07	***

```

shape_                0.211969    0.027268    7.773 7.64e-15 ***
---
Signif. codes:  0 '***' 0.001 '**' 0.01 '*' 0.05 '.' 0.1 ' ' 1

```

Number of iterations in nlminb optimization: 48

```

Execution time    39
Log-likelihood: -2077.0244 on 12 Df

```

Note that the scale (`scale_`) and shape (`shape_`) parameters are reported on the log scale in this example and hence in order to recover the values in (McShane et al., 2008, Table 2), one should apply `exp()` to the coefficient values.

4 Residuals

Residuals measure the departure of fitted values from observed values of the response variables. They can be used to detect model misspecification: outliers, poor fit for given values of the covariates and/or the count values. Whereas a universal definition of residuals exists for linear models (the difference, possibly standardised, between observed and fitted values), this universality is lost for nonlinear models. Many definitions have been suggested in the literature (see the discussion in Cameron and Trivedi (2013, Section 5.2)) and depending on the aims of the analysis, one definition may be more useful than another.

For renewal-count models, the Pearson residuals are easy to compute and can be used in diagnostic plots. Such plots need to be interpreted with care however since there are no theoretical results for renewal-count models justifying the asymptotic normality of residuals. There is also little hope to make them identically distributed.

The `Countr` package provides a method to compute Pearson residuals and a routine `residuals_plot()` to plot them in order to assist the analyst when trying to work out some patterns that would lead to model improvement (detect outliers, introduce covariates in a different form, etc.).

```
residuals_plot(wei, type = "pearson")
```

In Figure 1, four diagnosis plots are presented for the fitted weibull count model. The top left graph shows the estimated density of the residuals. The distribution has a mode around zero, is slightly right skewed and has fat tails. The departure from normality is confirmed in the qq-plot (top-right) especially for large values of the residuals (absolute values larger than 2). The bottom graphs plot the residuals against the predicted mean and predicted scale and show the presence of some outliers.

One can also compare the residuals of the previously fitted models (Poisson and Weibull):

```

par(mfrow = c(1, 2))
res_wei <- residuals(wei, type = "pearson")
qqnorm(res_wei, ylim = range(res_wei), main = "Weibull Renewal Model")
qqline(res_wei, ylim = range(res_wei))
grid()
pois <- glm(formula = form, data = fertility, family = poisson())
res_pois <- residuals(pois, type = "pearson")
qqnorm(res_pois, ylim = range(res_wei), main = "GLM Poisson")
qqline(res_pois, ylim = range(res_wei))
grid()

```

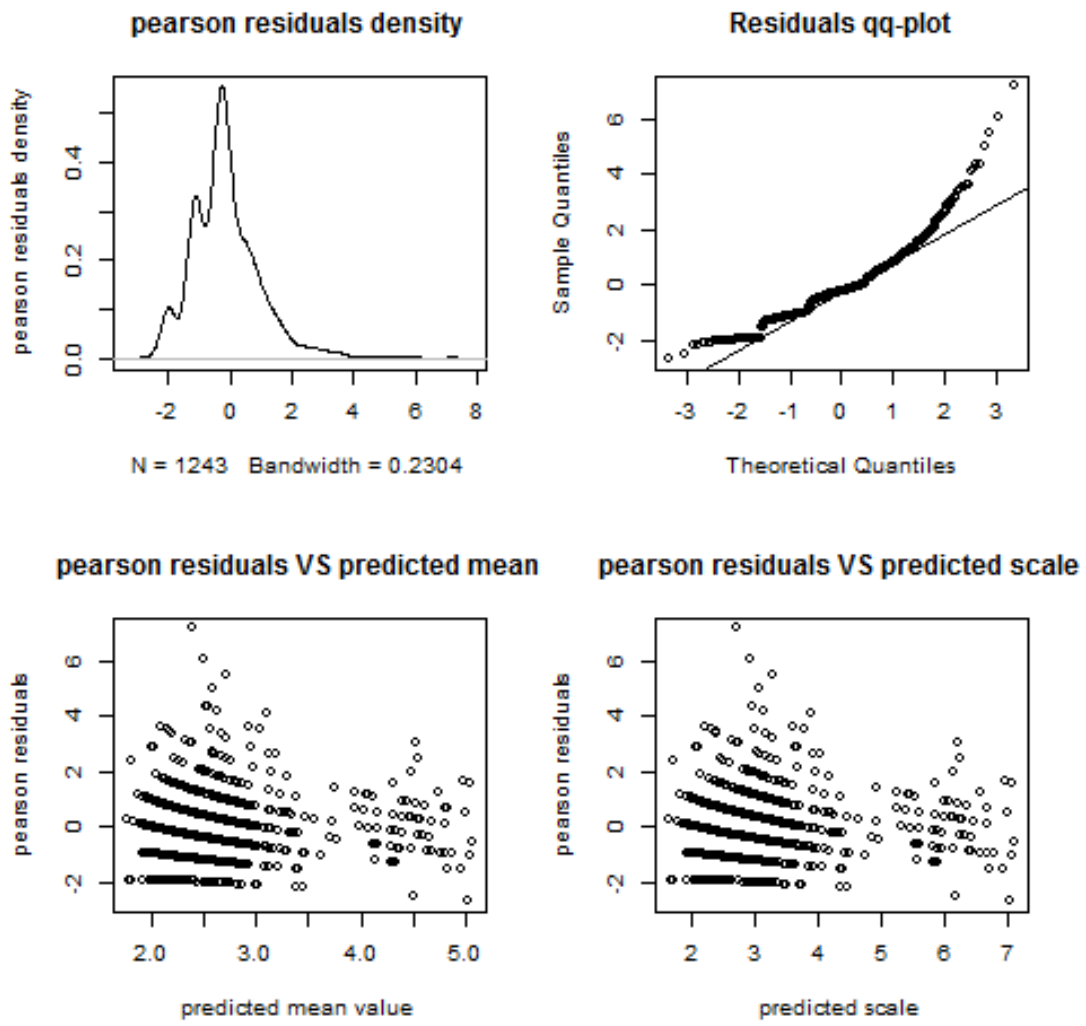


Figure 1: Weibull model: residuals analysis

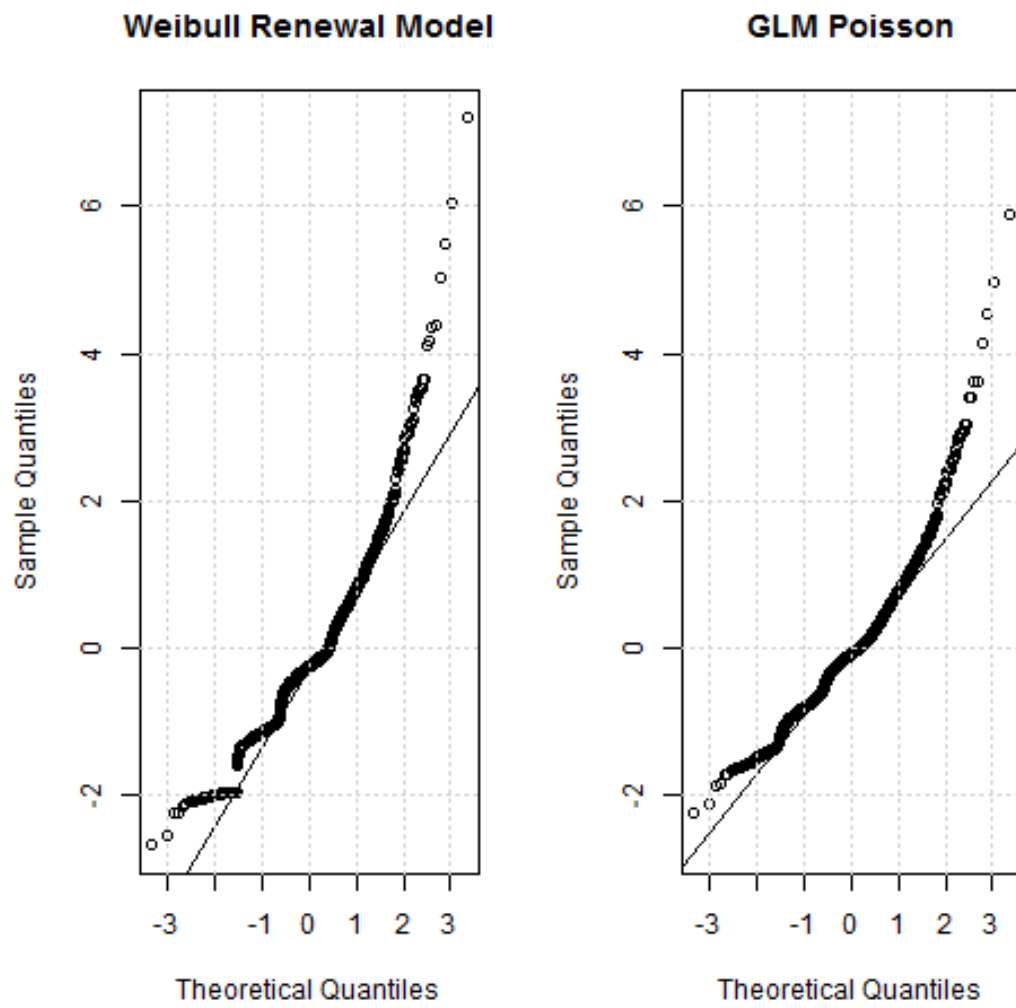


Figure 2: Normal QQ-plots for the Weibull and Poisson Pearson's residuals. Both are clearly not normal.

Figure 2 shows that the Weibull and Poisson Pearson’s residuals are not normal. It could be speculated that the Poisson’s residuals are somewhat closer to normality but this is doesn’t really give az basis for informed decision.

5 Statistical Tests

The Poisson and weibull models can be considered nested. In fact, the Poisson model is a special case of the weibull with a shape parameter equal to 1 (0 on the log scale).

5.1 t-test

Based on the previous observation, one can test the significance of the shape parameter using the usual *t-test*. The *t-test* is a special case of the Wald test (see Cameron and Trivedi (2013, Section 2.6)). Let θ be the regression coefficients and j be the index of the shape parameter. The null hypothesis is defined as $H_0 : \theta_j = 0$ to be tested against the alternative hypothesis $H_a : \theta_j \neq 0$. The test statistic T_z is defined by:

$$T_z = \frac{\hat{\theta}_j}{\sqrt{v_{jj}}} \quad (1)$$

where $\hat{\theta}_j$ is the estimated shape parameter and $\sqrt{v_{jj}}$ its estimated standard error. Asymptotically, T_z is standard normal. We reject H_0 against H_a at significance level α if $|T_z| > z_{\alpha/2}$.

Following standard practice in R, the *t-test* and the associated p-values are reported when calling the `summary()` method for a fitted regression model. Therefore, in order to obtain the value of the *t-test* for the shape value, the user can use the following code:

```
form <- children ~ german + years_school + voc_train + university + Religion +
  year_birth + rural + age_marriage
wei <- renewalCount(formula = form, data = fertility, dist = "weibull",
  control = renewal.control(trace = 0, method = "nlminb")
)
wei_summary <- summary(wei)$coef

t_shape <- wei_summary[rownames(wei_summary) == "shape_", , drop = FALSE]
print(xtable(t_shape), floating = FALSE)
```

	Estimate	Std. Error	z value	Pr(> z)
shape_	0.21	0.03	7.79	0.00

The test statistic is $T_z = 7.794$, which means that \bar{H}_0 can be rejected at any reasonable significance level. Therefore, according to the *t-test*, the Poisson model can be rejected in favour of the weibull one.

5.2 Likelihood ratio test

Given that the estimation procedure for both models is likelihood based, one classical statistical technique for testing hypotheses (for nested models) is the likelihood ratio test. One can formulate the null hypothesis as being in favour of the Poisson model. The *likelihood ratio test statistic* is defined as:

$$T_{LR} = -2[L_0 - L_a] \quad (2)$$

which is asymptotically $\chi^2(h)$ under H_0 and h is the difference in degree of freedom between the models (here $h = 1$). H_0 is rejected against H_a at significance level α if $T_{LR} > \chi^2(h; \alpha)$.

In R, one can use the `lmtest` package (Zeileis and Hothorn, 2002) to conduct the likelihood ratio test as shown below:

```
library(lmtest)
lrtest(pois, wei)

[1] "7.794"
Likelihood ratio test

Model 1: children ~ german + years_school + voc_train + university + Religion +
  year_birth + rural + age_marriage
Model 2: children ~ german + years_school + voc_train + university + Religion +
  year_birth + rural + age_marriage
#Df  LogLik Df  Chisq Pr(>Chisq)
1   11 -2101.8
2   12 -2077.0  1 49.559  1.925e-12 ***
---
Signif. codes:  0 '***' 0.001 '**' 0.01 '*' 0.05 '.' 0.1 ' ' 1
Warning message:
In modelUpdate(objects[[i - 1]], objects[[i]]) :
  original model was of class "glm", updated model is of class "renewal"
```

The warning message simply reminds the user that the models have different classes and can be safely ignored here. The test shows that H_0 can be rejected at any significance level and comforts the conclusion of the *t-test* described earlier: The Weibull model should be preferred to the Poisson for the fertility data.

6 Goodness of Fit

For fully parametric models such as Poisson or renewal-count, a crude diagnosis is to compare the fitted probabilities with observed frequencies. Things are better understood with a formula. Define the count variable $y_i, i = 1, \dots, n$ where n is the total number of individuals and let $m = \max(y_i)$. We denote by \bar{p}_j the observed frequencies (the fraction of the sample where $y = j$) and let $\hat{p}_j, j = 1, \dots, m$ the fitted frequencies. For example, in the Poisson model, $\hat{p}_j = \frac{1}{n} \sum_{i=1}^n \exp(-\hat{\mu}_i^j) / j!$.

To start with, one can compare \bar{p}_j to \hat{p}_j for specific values of the count variable j to gain some insight about the range of counts where the model has a tendency to over or under predicts or to allow a visual inspection of the predictive performance of competing models. This computation can be done in **Counter** by a call to the function `compareToGLM` which can take a fitted Poisson and (optionally) a negative binomial model and compare them to a number of fitted **renewal** models passed in `...`. The function will return a table with \bar{p}_j (**Actual**) and the \hat{p}_j induced by the different models. The contribution to the Pearson statistic of each cell defined as $\sum_{j=1}^J n \frac{(\bar{p}_j - \hat{p}_j)^2}{\hat{p}_j}$ will also be computed. Note that here we specified the cells by providing the `breaks` argument: the two cells 5-6 and 7-8 were merged and counts larger than 9 have also been merged.

```
form <- children ~ german + years_school + voc_train + university + Religion +
```

```

year_birth + rural + age_marriage
pois <- glm(formula = form, data = fertility, family = poisson())
wei <- renewalCount(formula = form, data = fertility, dist = "weibull",
                    control = renewal.control(trace = 0, method = "nlminb")
                    )
tab <- compareToGLM(poisson_model = pois, breaks = c(0:5, 7, 9), weibull = wei)
tab_tbl <- xtable(tab, caption = "Comparison between some models.")
print(tab_tbl)

```

	Counts	Actual	weibull_predicted	poisson_predicted	weibull_pearson	poisson_pearson
1	0	0.06	0.07	0.10	0.52	22.66
2	1	0.19	0.23	0.23	7.17	6.60
3	2	0.39	0.29	0.25	42.15	90.97
4	3	0.18	0.22	0.19	6.33	0.69
5	4	0.09	0.12	0.12	5.04	4.93
6	5-6	0.06	0.07	0.09	2.30	10.16
7	7-8	0.01	0.01	0.02	2.58	0.22
8	>= 9	0.01	0.00	0.00	18.40	2.71

Table 5: Comparison between some models.

In a first step, one can compare the Pearson statistics:

```
colSums(dplyr::select(tab, contains("_pearson")))
```

```

weibull_pearson poisson_pearson
      84.48827      138.94820

```

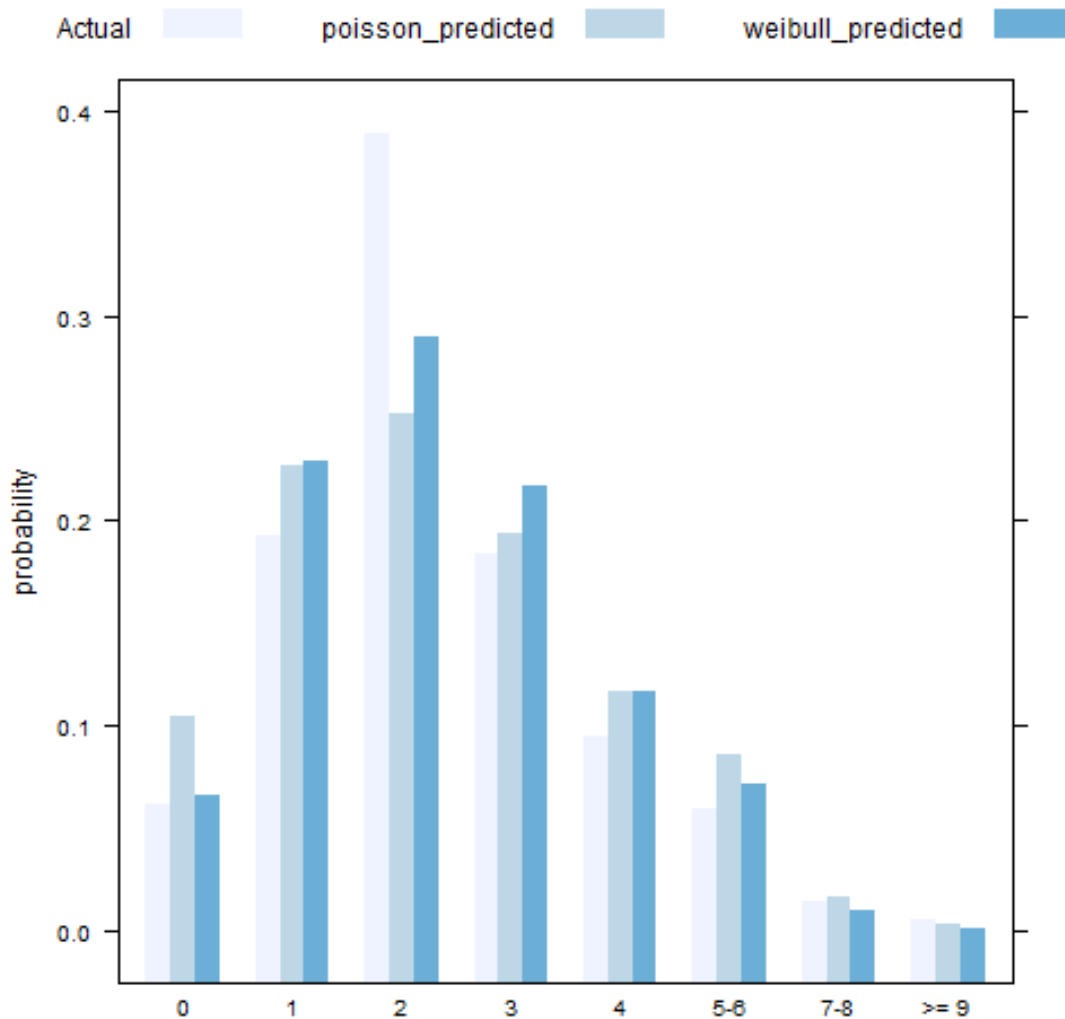
It can be seen that the Pearson statistic for the Poisson model is 40% larger than the one achieved by the weibull model. It is also interesting to note the contribution to the Pearson statistic is substantially smaller in the Poisson case for cells 7-8 and 9 and larger. This was already observed in the residuals plot and shows the Poisson model presents a 'better' fit in the tails and hence is less robust to outliers. In fact, the Poisson fitting process focuses on minimising the 'mean-error' and hence the estimation maybe influenced by outliers (It is well known that the mean is not robust to outliers). The weibull model with the extra shape parameter somehow smooths this effect. Depending on the analyst goal (predicting the mean or the different probabilities), this feature maybe seen as a desired addition. For more on this, see the discussion in [Cameron and Trivedi \(2013, Section 6.2\)](#).

More insight can be gained by visualising the previous results. This can be done by calling the function `frequency_plot()` as follows:

```

frequency_plot(tab$Counts, tab$Actual,
              dplyr::select(tab, contains("_predicted")))
)

```



Visualising the result can be a good starting point but without a formal test, it is hard to conclude if \hat{p}_j is a *good approximation* to \bar{p}_j and hence if the model fits the data well. Cameron and Trivedi (2013, Section 5.3.4) suggest a formal *chi-square goodness-of-fit test* which is a generalisation of the Pearson's *chi-square test* and controls for estimation error in \hat{p}_j . The test is a conditional moment test. It has been implemented in **Countr** in the `chiSq_gof()` method using the gradient version which is justified for renewal models as they are fully parametric and parameters estimated is based on maximum-likelihood.

```
form <- children ~ german + years_school + voc_train + university + Religion +
  year_birth + rural + age_marriage
wei <- renewalCount(formula = form, data = fertility, dist = "weibull",
  control = renewal.control(trace = 0, method = "nlminb")
)
gof <- chiSq_gof(wei, breaks = c(0:5, 7, 9))
gof
```

chi-square goodness-of-fit test

Cells considered 0 1 2 3 4 5-6 7-8 >= 9

```

DF  Chisq Pr(>Chisq)
1  7 70.167  1.367e-12 ***

```

```

Signif. codes:  0 '***' 0.001 '**' 0.01 '*' 0.05 '.' 0.1 ' ' 1

```

The formal chi-square test statistic yields a value 70.17, compared to $\chi^2(7)$ critical value of 12.02 at 5%. The weibull model, although preferred to the Poisson according to the LR test, is strongly rejected. For this type of models with bi-modal distribution, mixture models are usually preferred. See the discussion in [Cameron and Trivedi \(2013, Chapter 6.2\)](#).

7 Conclusion

The above analysis suggests, on several measures, that the weibull count model is better than the Poisson model for the fertility dataset but it may not be good enough, as well.

References

- Baker, R. and Kharrat, T. (2017). Event count distributions from renewal processes: fast computation of probabilities. *IMA Journal of Management Mathematics*.
- Cameron, A. C. and Trivedi, P. K. (2013). *Regression analysis of count data*, volume 53. Cambridge university press.
- Dahl, D. B. (2016). *xtable: Export Tables to LaTeX or HTML*. R package version 1.8-2.
- Kharrat, T. and Boshnakov, G. N. (2017). *Countr: Flexible Univariate Count Models Based on Renewal Processes*. R package version 3.4.0.
- Kharrat, T., Boshnakov, G. N., McHale, I., and Baker, R. (2019). Flexible regression models for count data based on renewal processes: The Countr package. *Journal of Statistical Software*, 90(13):1–35.
- McShane, B., Adrian, M., Bradlow, E. T., and Fader, P. S. (2008). Count models based on weibull interarrival times. *Journal of Business & Economic Statistics*, 26(3):369–378.
- R Core Team (2016). *R: A Language and Environment for Statistical Computing*. R Foundation for Statistical Computing, Vienna, Austria.
- Wickham, H. and Francois, R. (2016). *dplyr: A Grammar of Data Manipulation*. R package version 0.5.0.
- Winkelmann, R. (1995). Duration dependence and dispersion in count-data models. *Journal of Business & Economic Statistics*, 13(4):467–474.
- Zeileis, A. and Hothorn, T. (2002). Diagnostic checking in regression relationships. *R News*, 2(3):7–10.